


Document Title		600# Hook Check Capability				
Document #	Rev	Type	Reason	Recommendation	Original Release Date	
ZSB-011	B 2016/08/30	Service Bulletin	Performance Enhance	Optional	2013/05/04	


## 600# Hook Check Capability (Hydraulic RHGSE Only)



Zephyr International LLC  
 5015 Enoch Rd, Conway SC 29526 USA  
 Phone 843-365-2675 \* Fax 843-365-2677  
 Email: [info@zephyrintl.com](mailto:info@zephyrintl.com)  
 Web: [www.zephyrintl.com](http://www.zephyrintl.com)

Serving Helicopter Rescue Hoist Users Worldwide

Prepared by	Michael R Mitchell	<a href="mailto:mmitchell@zephyrintl.com">mmitchell@zephyrintl.com</a>
Checked by	Jim Brown	<a href="mailto:jbrown@zephyrintl.com">jbrown@zephyrintl.com</a>
Approved by	Elizabeth Bielsa-Mitchell	<a href="mailto:zephyradmin@zephyrintl.com">zephyradmin@zephyrintl.com</a>
Purpose	Performance Enhance	
Recommendation is Mandatory or Optional	Optional	

Document Title		600# Hook Check Capability				
Document #	Rev	Type	Reason	Recommendation	Original Release Date	
ZSB-011	B 2016/08/30	Service Bulletin	Performance Enhance	Optional	2013/05/04	

**Purpose:** To advise users of the Hydraulic Rescue Hoist Ground Support Equipment of a modification to provide the means to perform the hook check and apply tension to the last 10 feet of cable.

Zephyr was requested to provide the ability to apply a 600 lbs. load to the hoist hook in order to perform the hook test as required by one of the OEMS Operation and Maintenance Manuals.


An eye bolt attachment has been added too new RHGSE units starting with S/N **H01130513**. For owners of units prior to that , Zephyr is offering a kit, that includes the eyebolt and jam nut , a tether , a small bungee cord, a label, and a template to be used to locate and drill and tap the unit to secure the eyebolt to the frame.

Users may also opt to provide their own hardware and use the mounting location is provided as a part of this bulletin to drill and tap the thread to attach the eyebolt to.

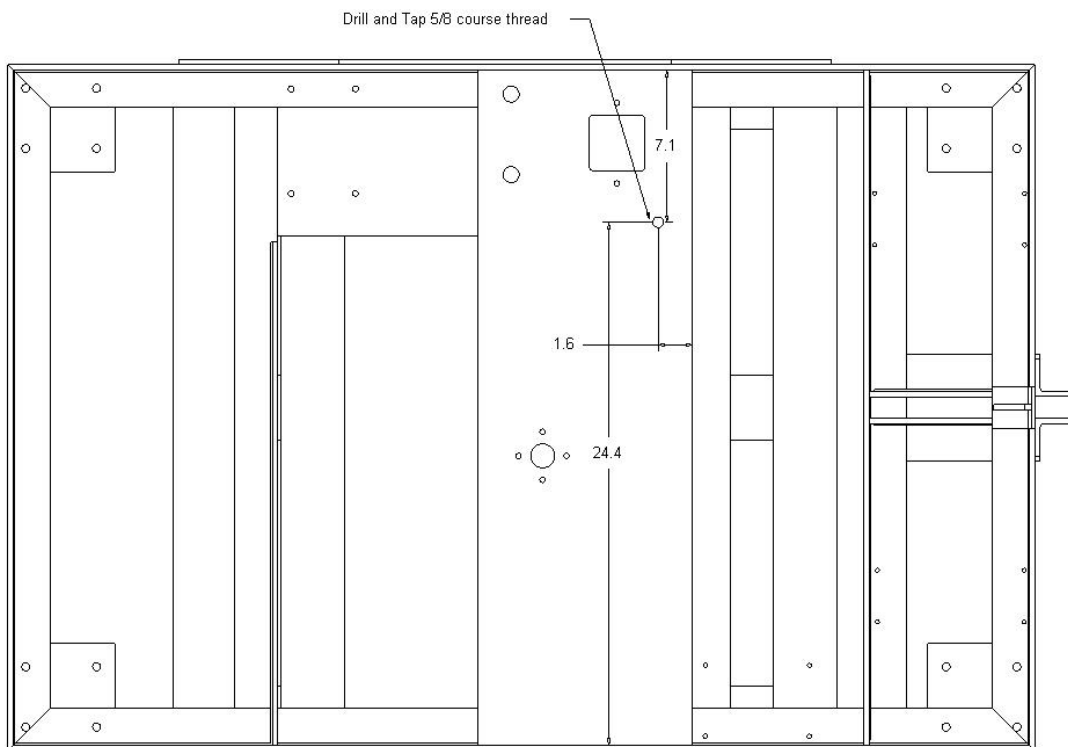
**Procedure:**

The cable attachment is shown below:

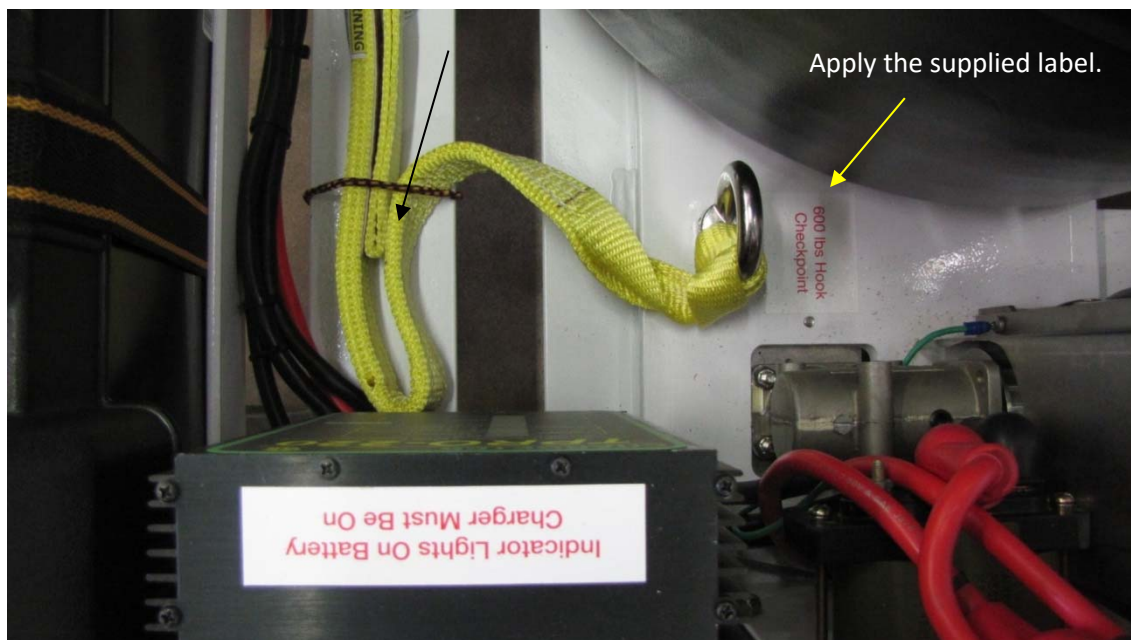


Document Title		600# Hook Check Capability				
Document #	Rev	Type	Reason	Recommendation	Original Release Date	
ZSB-011	B 2016/08/30	Service Bulletin	Performance Enhance	Optional	2013/05/04	

The eyebolt uses a 5/8 course thread and is mounted in the position shown below.




A small bungee cord is supplied to secure the tether to the RHGSE when not in use.



Close the ends of the bungee once attached.



Document Title		600# Hook Check Capability				
Document #	Rev	Type	Reason	Recommendation	Original Release Date	
ZSB-011	B 2016/08/30	Service Bulletin	Performance Enhance	Optional	2013/05/04	

To apply 600 lbs. to the hook, attach the hook as shown:


Alternatively, one can use a strap to attach the eyebolt to the hook.



When the frame starts to lift off the ground, a load of 600 lbs. is applied to the cable via the hook.

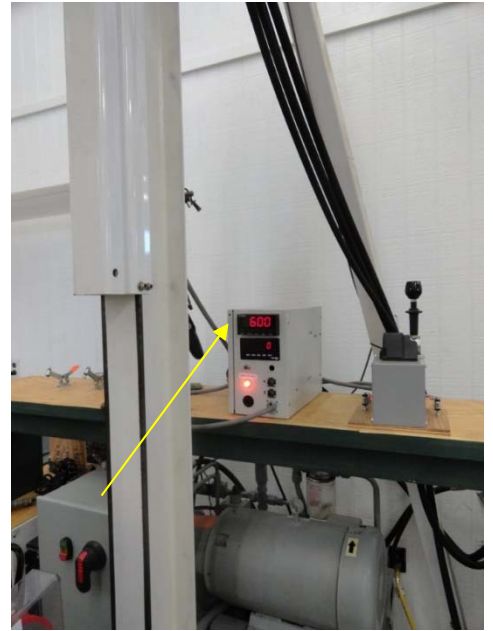
When tapping and installing the eye bolt **use caution to avoid hitting the belt that is below the frame**, and use a jam nut to lock the bolt in place with the lower face of the thread flush with the lower face of the frame member.



Document Title		600# Hook Check Capability				
Document #	Rev	Type	Reason	Recommendation	Original Release Date	
ZSB-011	B 2016/08/30	Service Bulletin	Performance Enhance	Optional	2013/05/04	

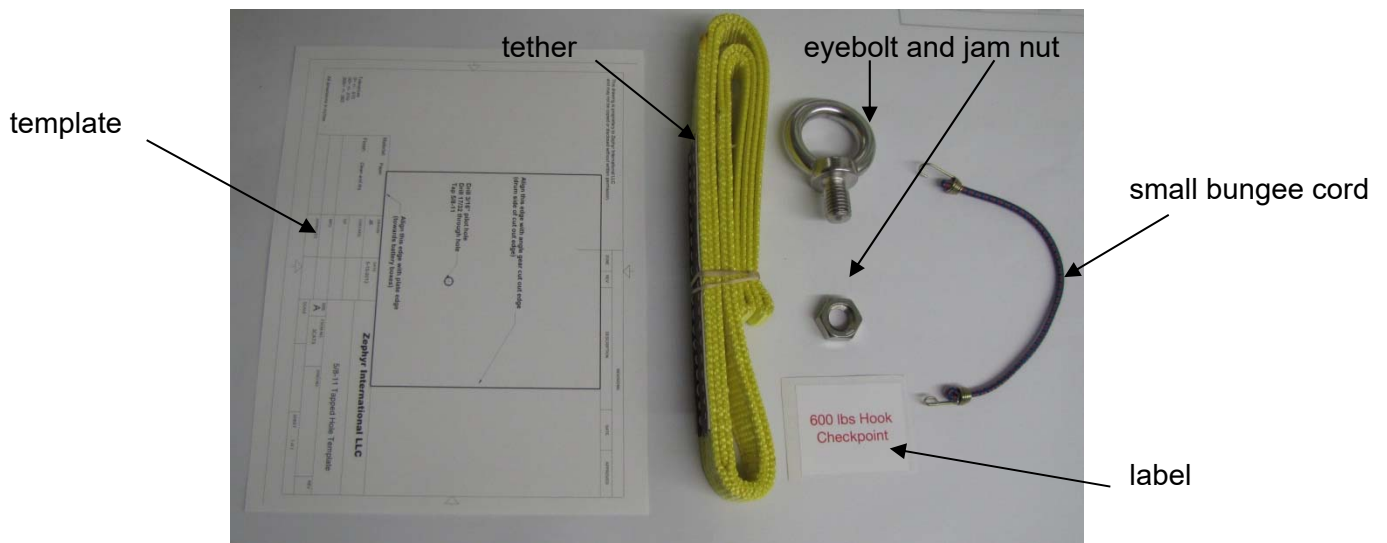


Carefully remove slack and lift the frame just enough to lift the front right wheel off the ground.



The position of the bolt is just right to apply a 600 lbs. load to the hook.

Parts included in kit.



**Price / Availability:** Contact Zephyr International for information