


Document Title		Appendix A, Hydraulic RHGSE Setup Guide		
Document No.	Rev	Document Type	Release Date	
Appendix A	A	Instructions	Sept 20, 2022	




ZOM-10000-X

Hydraulic RHGSE Setup Guide

Hydraulic Rescue Hoist Ground Support Equipment

Reference: ZOM-10000-X

Appendix A

Document Title		Appendix A, Hydraulic RHGSE Setup Guide		
Document No.	Rev	Document Type	Release Date	
Appendix A	A	Instructions	Sept 20, 2022	

A.1 Information

A.1.1 Support

Please contact Zephyr International LLC with any questions.

Zephyr Technical Support

Email: info@zephyrintl.com

Phone: 1-843-365-2675


Online Support

Visit website at www.zephyrintl.com

- Sign up for the Members Only section, browse available information and resources.
- Register your serial number information and identify a point of contact for future service bulletin release(s).

A.1.2 Table of Contents

A.1 Information	2
A.1.1 Support	2
A.1.2 Table of Contents	2
A.2 Uncrating	3
A.2.1 Open Crate.	3
A.2.2 Install Ramp.	3
A.2.3 Remove Shipping Braces.	3
A.2.4 Support Ramp.	4
A.2.5 Remove Hold Downs.	4
A.2.6 Detatch Work Platform Railing Mount.	4
A.2.7 Engage Swivel Locks.	5
A.2.8 Release Tow Handle.	5
A.2.9 Remove RHGSE.	5
A.2.10 Unlock Swivel Locks.	6
A.2.11 Remove Desiccant.	6
A.2.12 Remove Oil.	6
A.2.13 Open MagSens Compartment.	7
A.2.14 Save Shipping Crate.	7
A.3 RHGSE Assembly	8
A.3.1 Install Work Platform Railing.	8
A.3.2 Attach Upper Weldment.	8
A.3.3 Attach LubriDryer.	9
A.3.4 Verify Valve Orientations.	9
A.3.5 Fill Hydraulic Tank.	9
A.3.6 Charge Batteries.	10

Document Title		Appendix A, Hydraulic RHGSE Setup Guide		
Document No.	Rev	Document Type	Release Date	
Appendix A	A	Instructions	Sept 20, 2022	

A.2 Uncrating

The equipment is shipped in a sturdy wooden crate specifically designed for transport and storage of the RHGSE. The Following steps are designed to inform the user on the best practices for removing the RHGSE from the shipping crate.

A.2.1 Open Crate.

- Remove all screws marked red 'R' on the front panel and both side panels. As highlighted by the red arrows below.



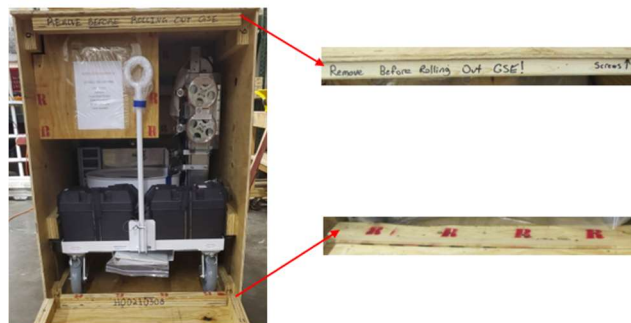
A.2.2 Install Ramp.


- Remove Front Panel and lay on crate lip to use as a ramp. Install a single screw through the ramp into the skit to prevent it from moving while rolling the RHGSE out of the Crate.



A.2.3 Remove Shipping Braces.

- top and bottom 2x4's.



Document Title		Appendix A, Hydraulic RHGSE Setup Guide		
Document No.	Rev	Document Type	Release Date	
Appendix A	A	Instructions	Sept 20, 2022	

A.2.4 Support Ramp.

- Stack the (2) shipping braces on top of each other and place them under the ramp for support. Ramp will sit on lip of crate.



A.2.5 Remove Hold Downs.


- Remove the (2) 2x4 hold downs and cardboard from sides as shown below.



A.2.6 Detach Work Platform Railing Mount.

- Remove the (6) screws marked red 'R' on the rear panel of the crate to detach the Work Platform Railing wooden shipping mount from the crate.



Document Title		Appendix A, Hydraulic RHGSE Setup Guide		
Document No.	Rev	Document Type	Release Date	
Appendix A	A	Instructions	Sept 20, 2022	

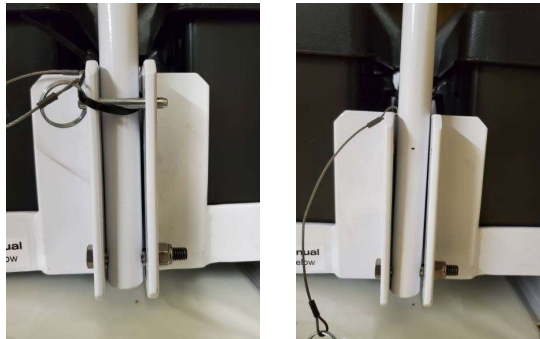
A.2.7 Engage Swivel Locks.

- The Swivel Locks should be engaged, and wheels should not be rotated until completely removed from crate.



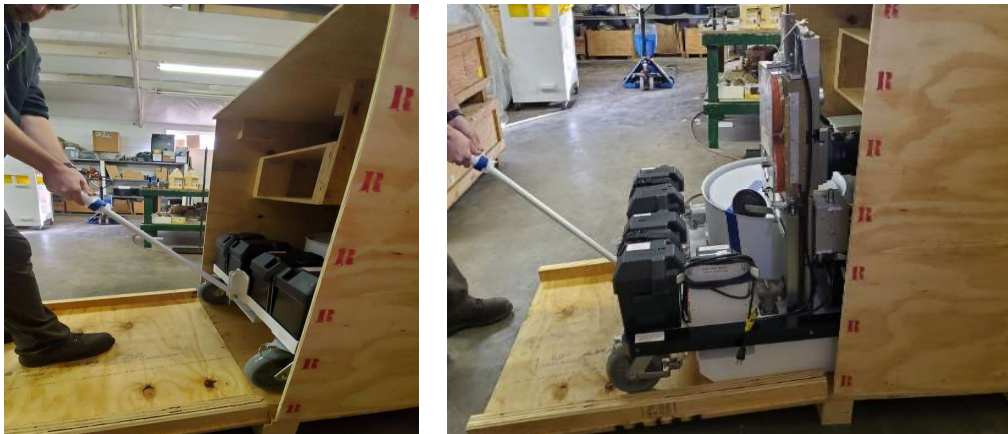
A.2.8 Release Tow Handle.


- Remove zip-ties that are used to retain the tow handle quick release pin during shipping and remove the QRP.



A.2.9 Remove RHGSE.

- Roll the RHGSE out of crate and down the ramp.



Document Title		Appendix A, Hydraulic RHGSE Setup Guide		
Document No.	Rev	Document Type	Release Date	
Appendix A	A	Instructions	Sept 20, 2022	

A.2.10 Unlock Swivel Locks.

- Unlock the Swivel Locks to rotate Casters. Then lock the Brakes and Swivel Locks.

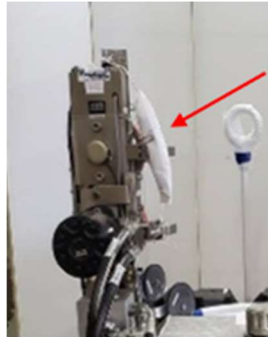


A.2.11 Remove Desiccant.

NOTE:

Desiccant may be located on tower, in Rotatub, or attached to work platform depending on configuration.

- Cut the string that attaches the Desiccant to the Upright Tower or remove it from inside the Tub and Spooler and Discard it.




A.2.12 Remove Oil.

NOTE:

Hydraulic oil may be in compartment or secured to work platform depending on configuration.

- Remove the screws marked with red 'R' on oil compartment panel and remove the (2) oil jugs from the crate.

Document Title		Appendix A, Hydraulic RHGSE Setup Guide		
Document No.	Rev	Document Type	Release Date	
Appendix A	A	Instructions	Sept 20, 2022	



A.2.13 Open MagSens Compartment.

NOTE:

A MagSens may be in the compartment or secured to work platform step depending on configuration.

Loose items may be in the compartment, inside Rotatub, or in separate box depending on configuration.


- If MagSens was purchased, remove the screws marked with a red 'R' and remove the MagSens compartment panel. Carefully remove all of the contents.



A.2.14 Save Shipping Crate.

- Place all packaging materials back inside the shipping crate for future deployment or storage. Re-attach the front panel by installing the side screws.



Document Title		Appendix A, Hydraulic RHGSE Setup Guide		
Document No.	Rev	Document Type	Release Date	
Appendix A	A	Instructions	Sept 20, 2022	

A.3 RHGSE Assembly

A.3.1 Install Work Platform Railing.

If a work platform was included with the RHGSE, it was shipped disassembled to meet shipping constraints and will need to be assembled using the following steps.

- Step 1** - Cut all plastic shipping straps and materials and remove the components from the RHGSE.
- Step 2** - Remove the (4) bolts that fasten the Railing to the wooden shipping brace.
- Step 3** - Stand Railing up on top of the work platform and fasten it using the (4) 3/8-16 x 1" Hex Bolts and (4) 3/8" Flat Washers as shown in the picture below. Torque to 234 in-lbs.




A.3.2 Attach Upper Weldment.

If a MagSens was purchased, an upper weldment will be present.

- Step 1** - Attach it to the upright bracket to the upper weldment using the provided hardware.



Document Title		Appendix A, Hydraulic RHGSE Setup Guide		
Document No.	Rev	Document Type	Release Date	
Appendix A	A	Instructions	Sept 20, 2022	

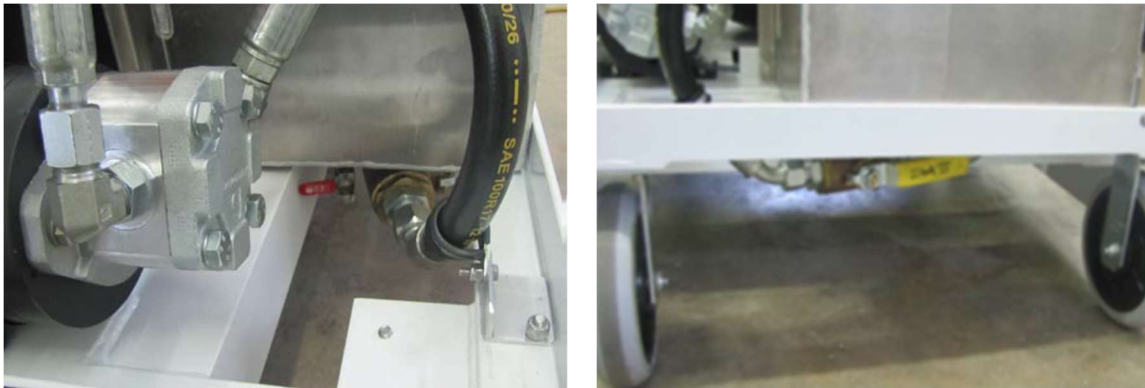
A.3.3 Attach LubriDryer.

- Attach the airline to Lubridryer then mount it to the upright bracket with the included fasteners as shown below.



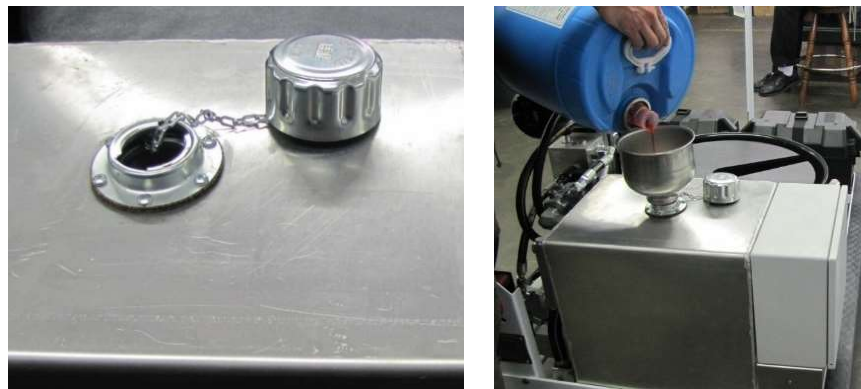
A.3.4 Verify Valve Orientations.


- Verify drain valve is closed and exit valve is open.



A.3.5 Fill Hydraulic Tank.

- Fill the Hydraulic Tank with 10 gal. of Mil-H-83282 that was provided.



Document Title		Appendix A, Hydraulic RHGSE Setup Guide		
Document No.	Rev	Document Type	Release Date	
Appendix A	A	Instructions	Sept 20, 2022	

A.3.6 Charge Batteries.

- Plug in the battery charger to an appropriate power source to ensure the Batteries are maintained.

NOTE:

It is critical that the batteries be charged as soon as uncrating and maintained in a charged state.

